

# VIKING SALES & SERVICE CENTER - VALHALLA BOAT SALES

99

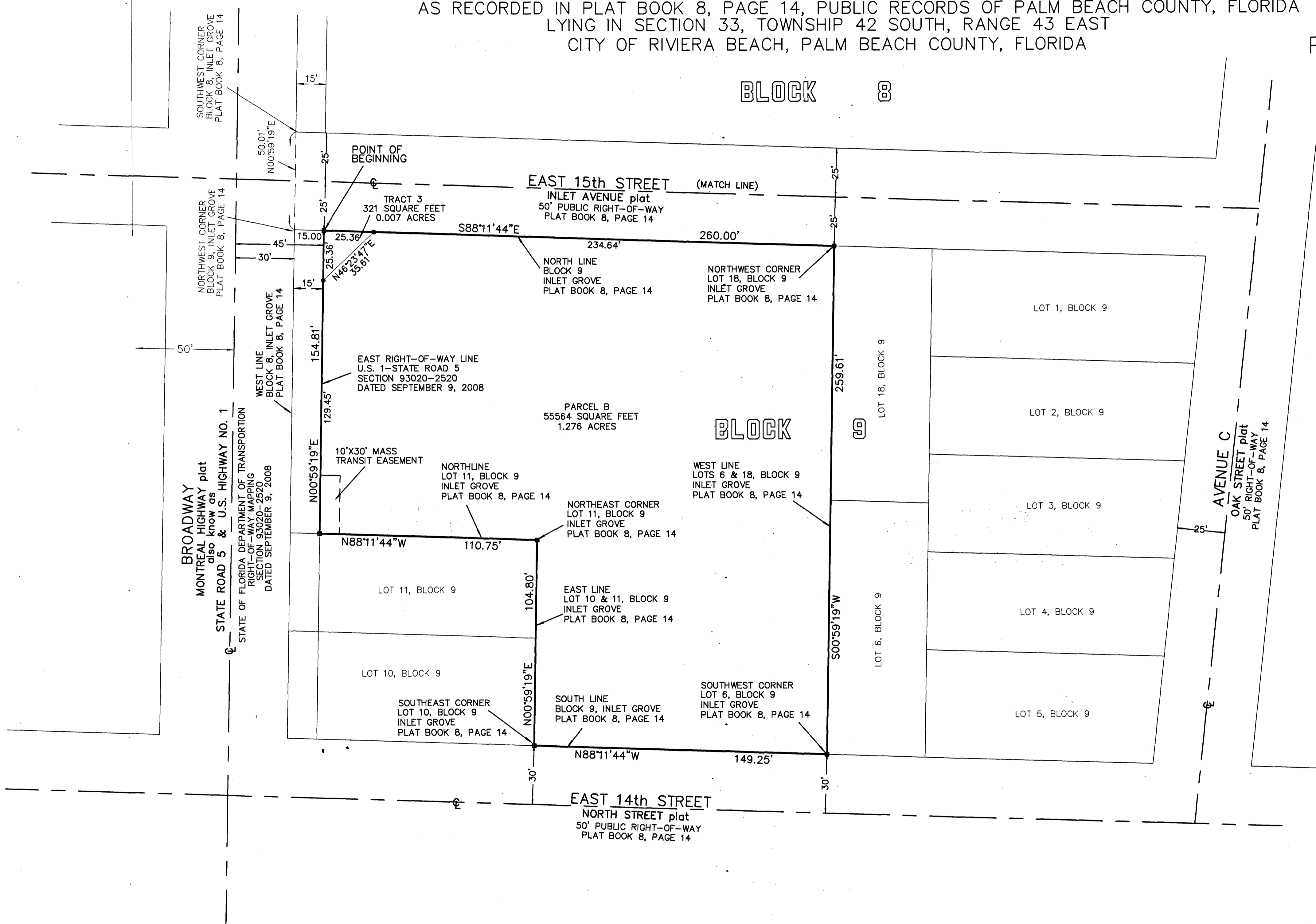
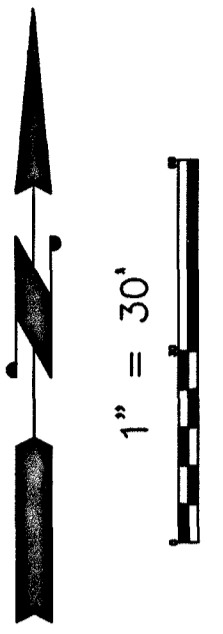
BEING A REPLAT LOTS 3 AND 4, AND LOTS 6 THROUGH 9, AND LOTS 10 THROUGH 14, LESS THE WESTERLY 15 FEET THEREOF,  
AND LOTS 15 THROUGH 17, BLOCK 8, INLET GROVE

AS RECORDED IN PLAT BOOK 8, PAGE 14, PUBLIC RECORDS OF PALM BEACH COUNTY, FLORIDA  
TOGETHER WITH:

LOTS 7 THROUGH 9, AND LOTS 12 THROUGH 14, LESS THE WESTERLY 15 FEET THEREOF, AND LOTS 15 THROUGH 17, BLOCK 9, INLET GROVE,  
AS RECORDED IN PLAT BOOK 8, PAGE 14, PUBLIC RECORDS OF PALM BEACH COUNTY, FLORIDA  
LYING IN SECTION 33, TOWNSHIP 42 SOUTH, RANGE 43 EAST  
CITY OF RIVIERA BEACH, PALM BEACH COUNTY, FLORIDA

PAGE 3 OF 3

B



AREA TABULATIONS	
PARCEL A	88696 SQUARE FEET OR 2.036 ACRES
PARCEL B	55564 SQUARE FEET OR 1.276 ACRES
TRACT 1	321 SQUARE FEET OR 0.007 ACRES
TRACT 2	304 SQUARE FEET OR 0.007 ACRES
TRACT 3	321 SQUARE FEET OR 0.007 ACRES
TOTAL AREA	145206 SQUARE FEET OR 3.333 ACRES

- LEGEND:**
- ⊕ = CENTERLINE
  - = SET 4" x 4" CONCRETE MONUMENT & DISC "P.R.M. L.B. 7571"
  - = FOUND 4" x 4" CONCRETE MONUMENT (NO ID)
  - = SET IRON ROD & CAP "L.B. 7571"
  - P.R.M. = PERMANENT REFERENCE MONUMENT

THIS INSTRUMENT WAS PREPARED BY  
RONALD E. STOTLER, P.L.S.  
FLORIDA SURVEYOR & MAPPER #5026  
IN THE OFFICE OF MAGELLAN SURVEYING & MAPPING, INC.  
450 SOUTH OLD DIXIE HIGHWAY, SUITE 10  
JUPITER, FLORIDA, 33458

JOB NUMBER: 21-275

**MAGELLAN SURVEYING & MAPPING, INC.**  
PROFESSIONAL LAND SURVEYORS  
M.S. & M.  
LICENSED BUSINESS - 7571  
450 S. OLD DIXIE HIGHWAY, SUITE 10  
JUPITER, FLORIDA 33458  
SINCE 2007 561-746-8745 FAX 561-746-9632 E-mail Info@magellansurveying.com